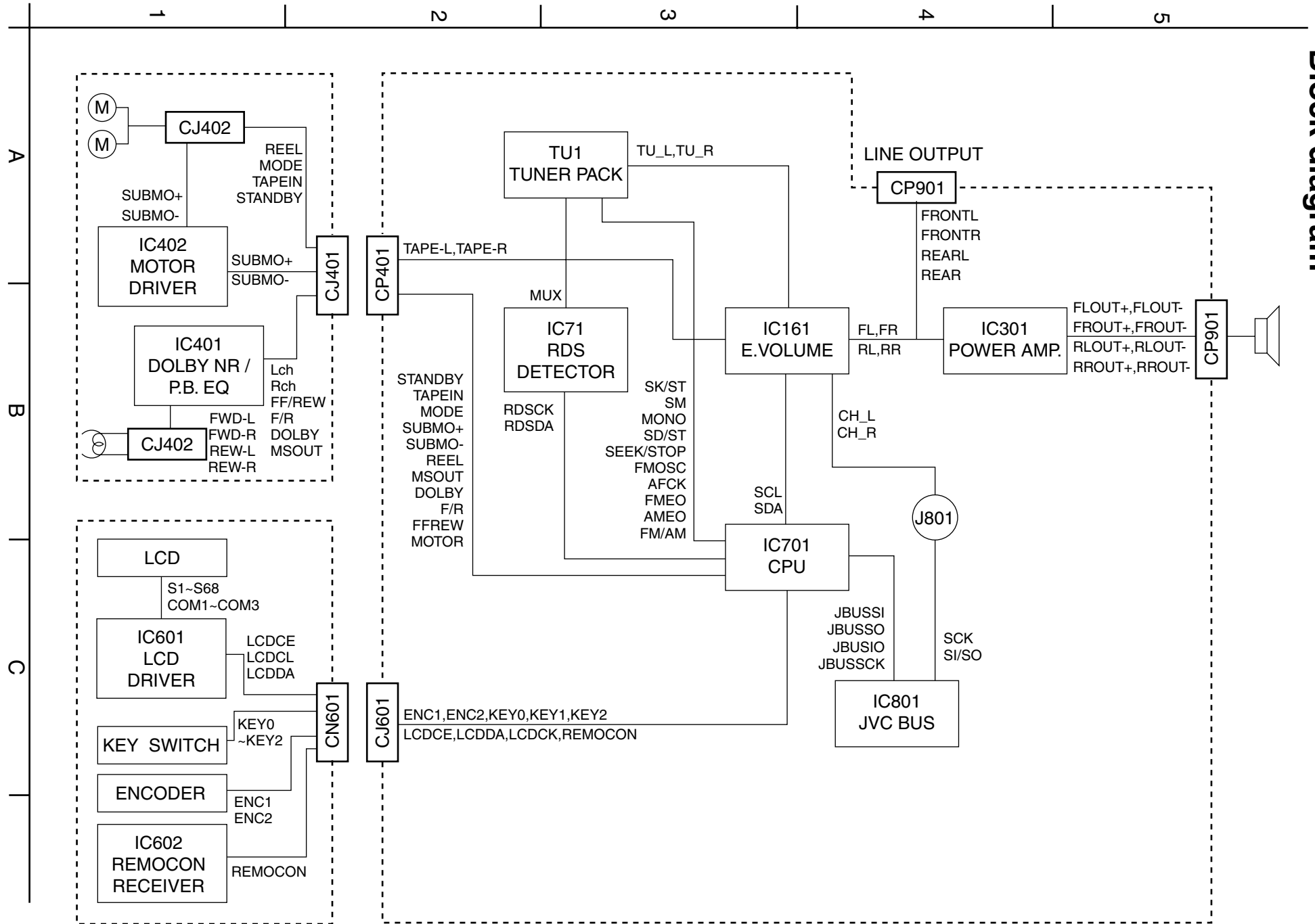


# Block diagram

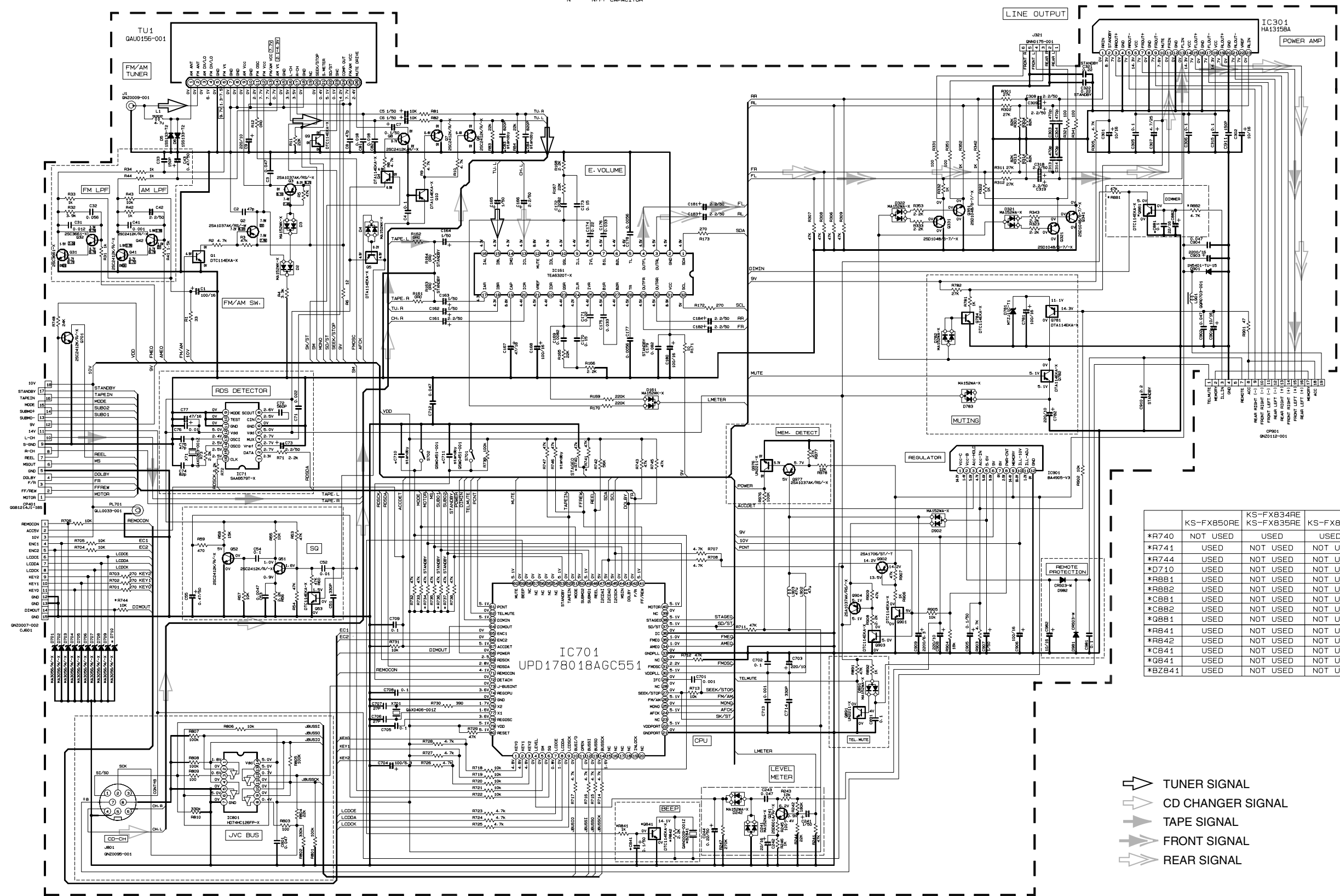
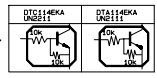


< MEMO >

# Standard schematic diagrams

## Tuner & Main circuit section

- NOTES
1. VOLTAGES ARE DC-MEASURED WITH A DIGITAL VOLT METER WITHOUT INPUT SIGNAL. CONDITION—FM MODE. □ AM MODE
  2. UNLESS OTHERWISE SPECIFIED, ALL RESISTORS ARE 1/10W OR 1/4W ±5% METAL GLAZE RESISTOR. ALL CAPACITORS ARE 50V OR 25V CERAMIC CAPACITOR. ALL RESISTANCE VALUES ARE IN ΩM. ALL CAPACITANCE VALUES ARE IN UF(pF). ALL E-CAPACITORS ARE SHOWN IN THE FORM OF CAPACITANCE(UF)/RATED VOLTAGE(V)
- TF — T. F. CAPACITOR  
N — N. F. CAPACITOR



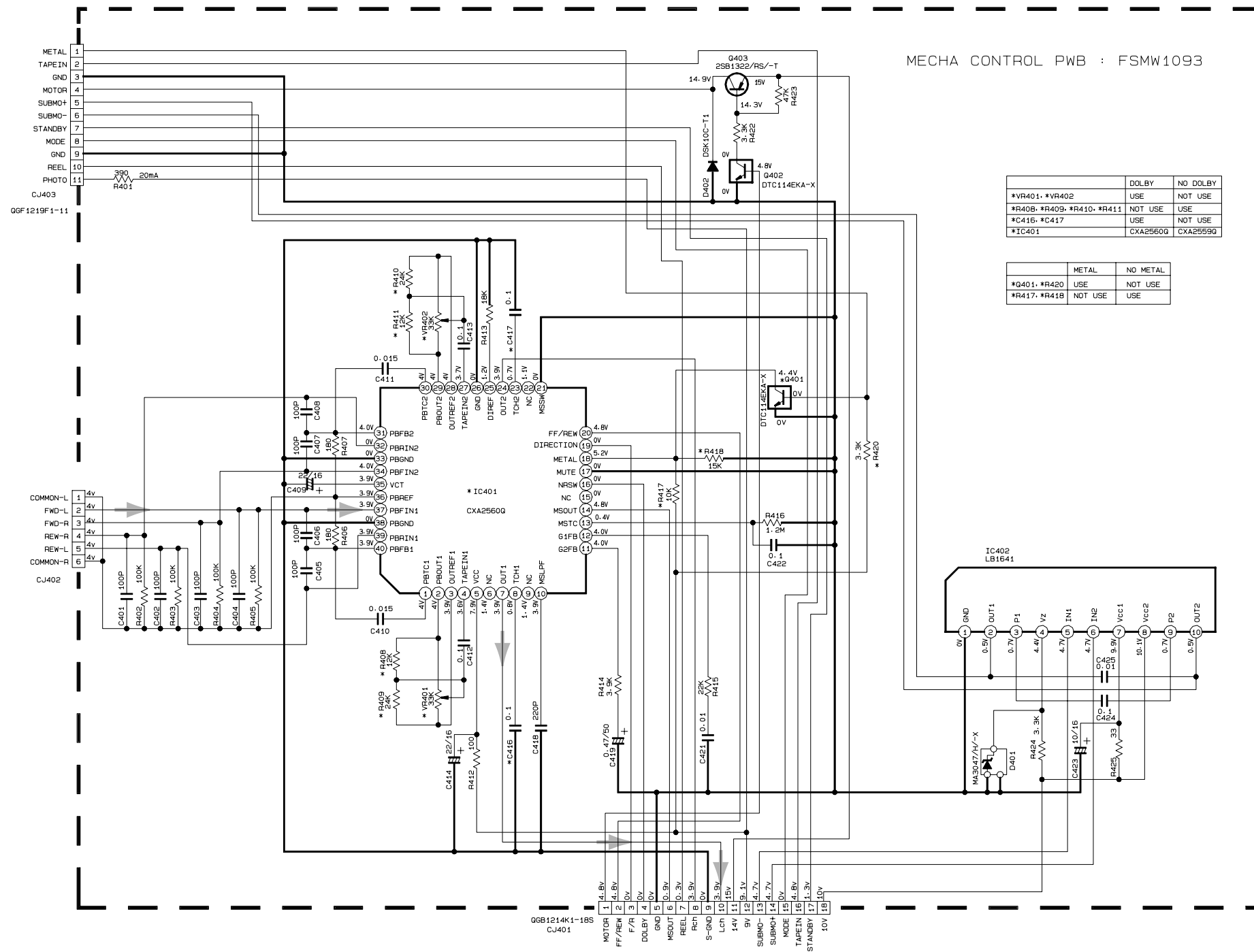
	KS-FX850RE	KS-FX834RE KS-FX835RE	KS-FX820RE
*R740	NOT USED	USED	USED
*R741	USED	NOT USED	NOT USED
*R744	USED	NOT USED	NOT USED
*D710	USED	NOT USED	NOT USED
*R881	USED	NOT USED	NOT USED
*R882	USED	NOT USED	NOT USED
*C881	USED	NOT USED	NOT USED
*C882	USED	NOT USED	NOT USED
*Q881	USED	NOT USED	NOT USED
*R841	USED	NOT USED	NOT USED
*R842	USED	NOT USED	NOT USED
*C841	USED	NOT USED	NOT USED
*Q841	USED	NOT USED	NOT USED
*BZ841	USED	NOT USED	NOT USED

- ▶ TUNER SIGNAL
- ▶ CD CHANGER SIGNAL
- ▶ TAPE SIGNAL
- ▶ FRONT SIGNAL
- ▶ REAR SIGNAL

MAIN PWB : FSMW1091

Note 0113ms  
FSD4013-005AV-KS-FX850RE-KS-FX835RE-KS-FX834RE-KS-FX820RE-KS-FX834RE

■ Mechanism control circuit section



NOTES

- VOLTAGES ARE DC-MEASURED WITH A DIGITAL VOLT METER WITHOUT INPUT SIGNAL. CONDITION-----TAPE MODE.
- UNLESS OTHERWISE SPECIFIED.
  - ALL RESISTORS ARE 1/4W ±5% OR 1/10W ±5% METAL GLAZE RESISTOR.
  - ALL CAPACITORS ARE 50V CERAMIC CAPACITOR.
  - ALL RESISTANCE VALUES ARE IN OHM(Ω).
  - ALL CAPACITANCE VALUES ARE IN \*F(PpF).
  - ALL E. CAPACITORS ARE SHOWN IN THE FORM OF CAPACITANCE(\*F)/RATED VOLTAGE(V)

TF-----TF CAPACITOR

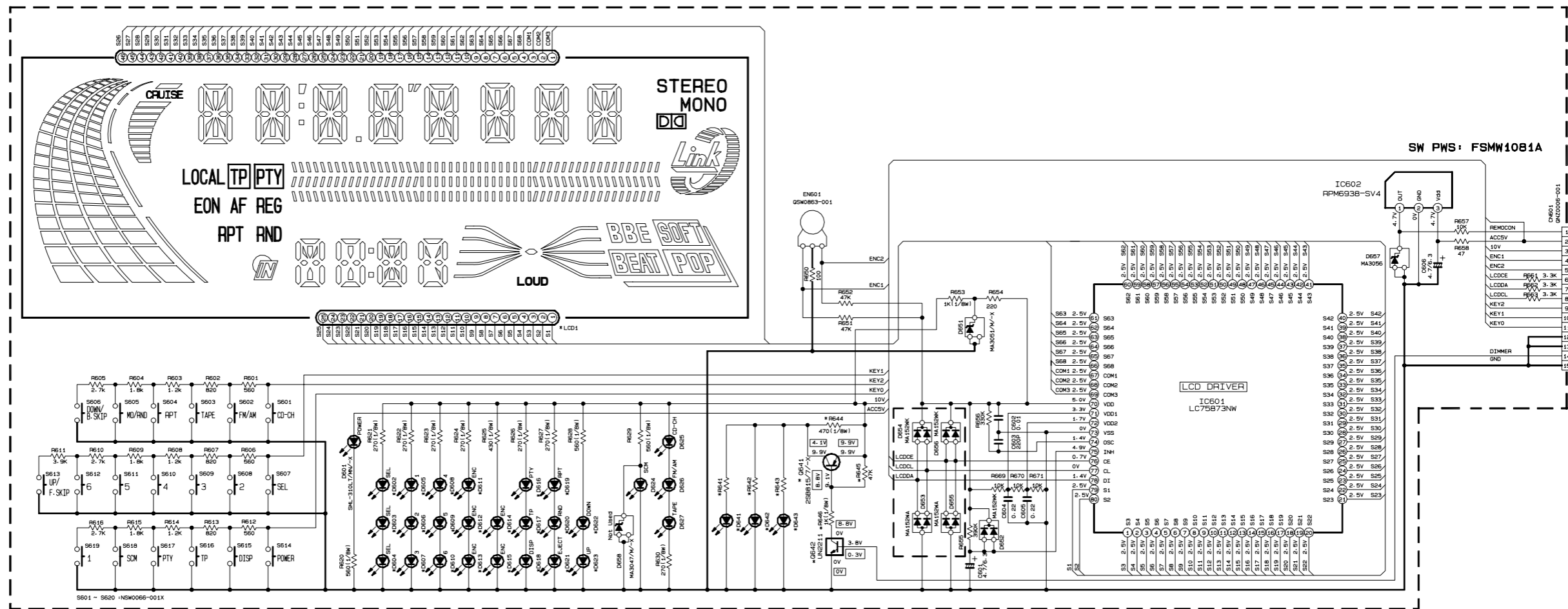
➔ TAPE SIGNAL

■ LCD & Key control circuit section

NOTES

1. VOLTAGES ARE DC-MEASURED WITH A DIGITAL VOLT METER WITHOUT INPUT SIGNAL.  
CONDITION - - - FM MODE  DIMMER ON
2. UNLESS OTHERWISE SPECIFIED,  
ALL RESISTORS ARE 1/4W 5% CARBON RESISTOR OR 1/4W-1/10W 5% METAL GLAZE RESISTOR.  
ALL CAPACITORS ARE 50V CERAMIC CAPACITOR.  
ALL RESISTANCE VALUES ARE IN OHM(Ω).  
ALL CAPACITANCE VALUES ARE IN F(PpF).  
ALL E-CAPACITORS ARE SHOWN IN THE FORM OF CAPACITANCE(μF) / RATED VOLTAGE(V).

	KS-FX850RE	KS-FX835RE	KS-FX820RE	KS-FX834RE
*LCD1	GLD0113-001	GLD0123-001	GLD0124-001	GLD0124-001
*D602, *D603, *D604, *D605, *D606 *D607, *D608, *D609, *D610, *D611 *D612, *D613, *D614, *D615, *D616 *D617, *D618, *D619, *D620, *D621 *D622, *D623, *D624, *D625, *D626 *D627	LNJ308G81/1-3/X	SML-310VT/JK/-X	LNJ308G81/1-3/X	SML-310VT/JK/-X
*D641, *D642, *D643	NSPW310BS/B/	NSPB320BS/V/	NSPW310BS/B/	SLA-360JT3F
*R645, *R646	USED	NOT USED	NOT USED	NOT USED
*Q641, *Q642	USED	NOT USED	NOT USED	NOT USED
*R641, *R642, *R643	470	560	1.0K	1.0K
*R644	470	0R0	0R0	0R0



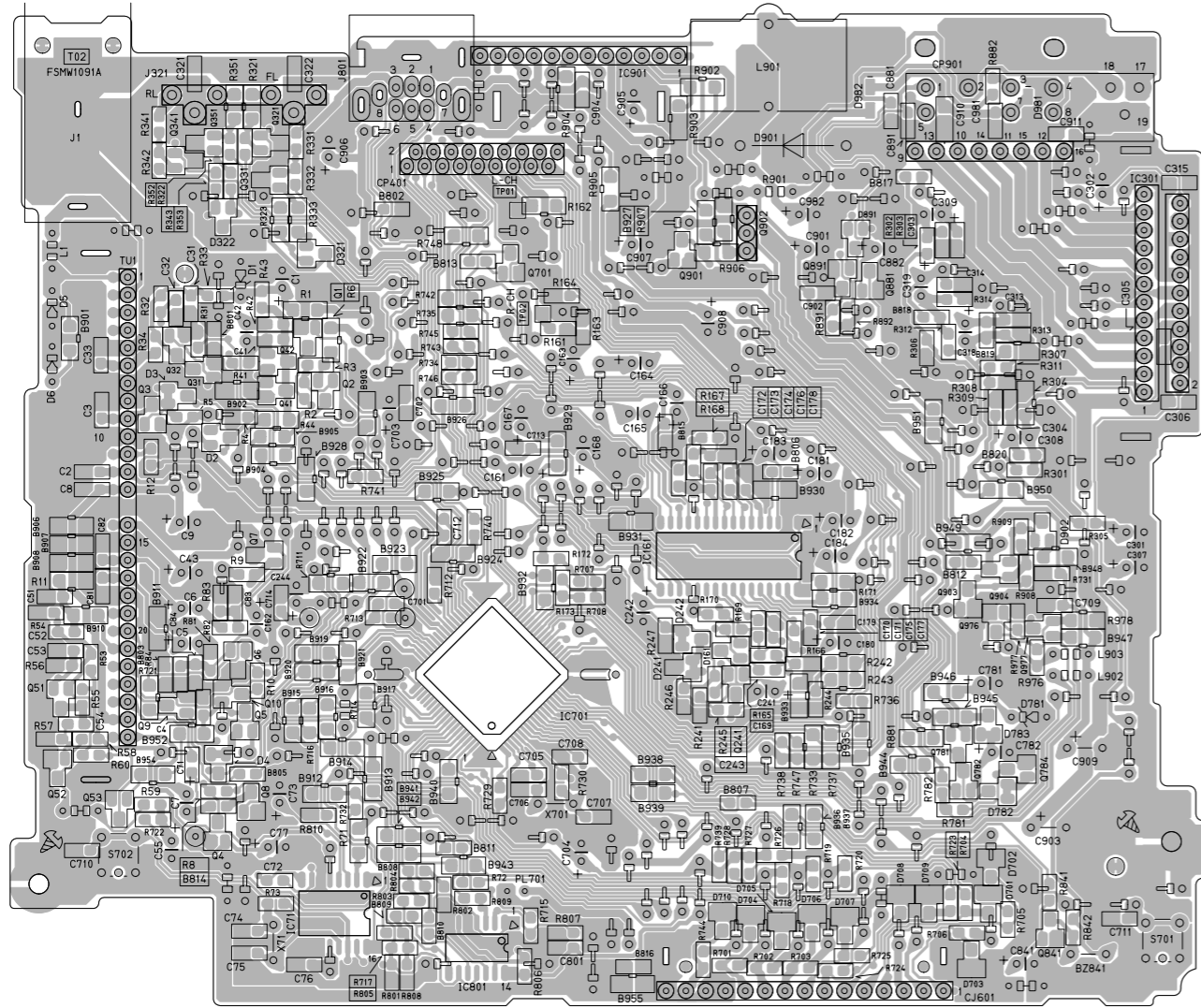
Note: 3113w  
FSDH3113SW-KS-FX850RE/KS-FX835RE/KS-FX820RE/KS-FX834RE

# Printed circuit boards

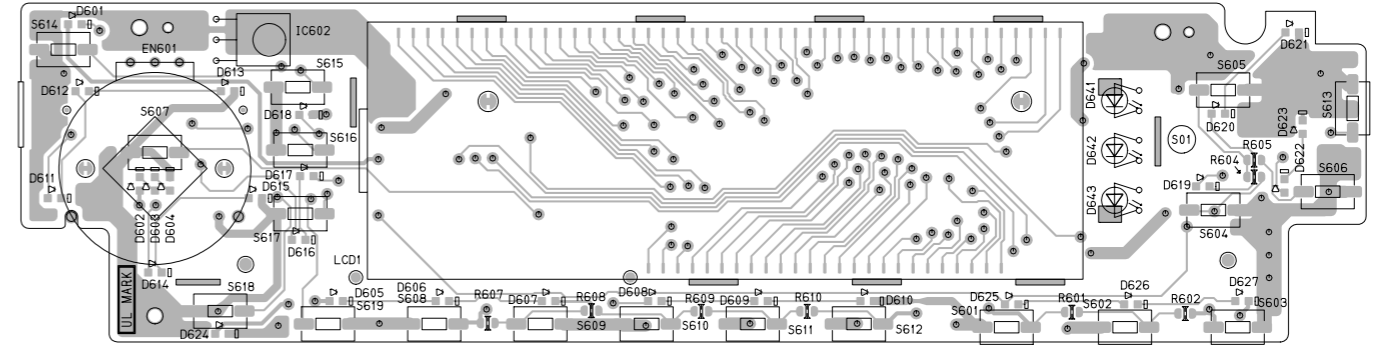
KS-FX834R

KS-FX834R

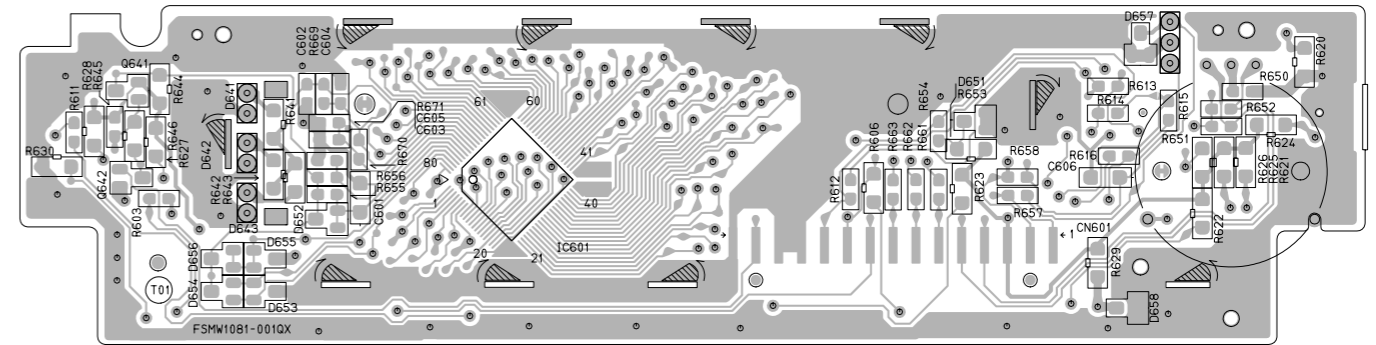
■ Main board



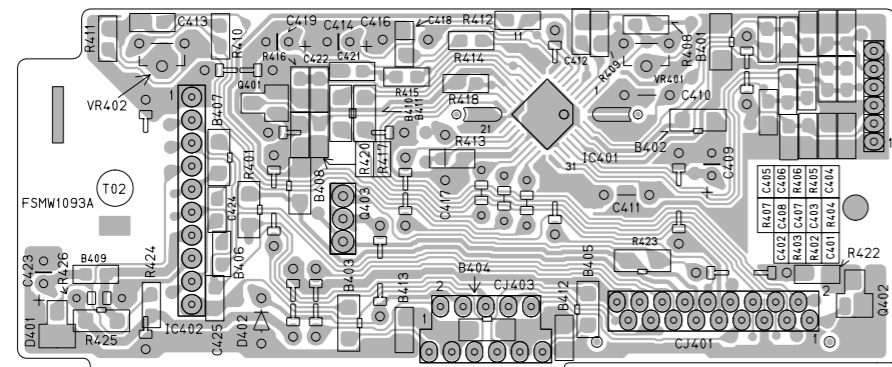
■ Front board (Forward side)



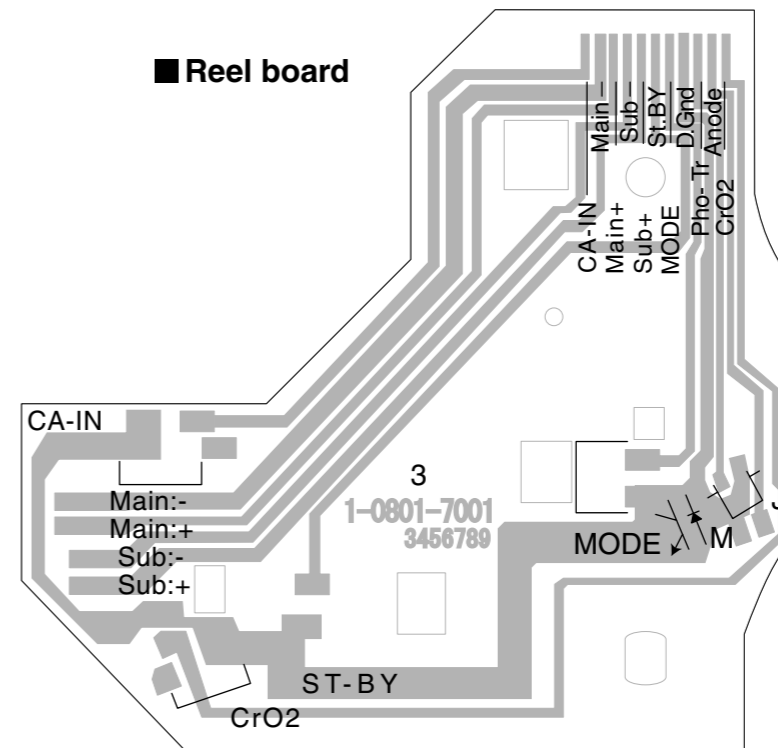
■ Front board (Reverse side)



■ Mecha control board



■ Reel board



5

4

3

2

1

A

B

C

2-6

D

E

F

G

H